

# Megaplex-2100/2104 Module

# HS-Q/N

## 4-Channel High Speed Data Module



- Programmable data rates up to 1,984 kbps in any multiple of 64 or 56 kbps
- Channels can be directed to any main link
- User-selectable V.35 or V.11/RS-422 interface for each channel
- DCE, EXT-DCE or DTE clock modes
- For any I/O slot of Megaplex-2100/2104

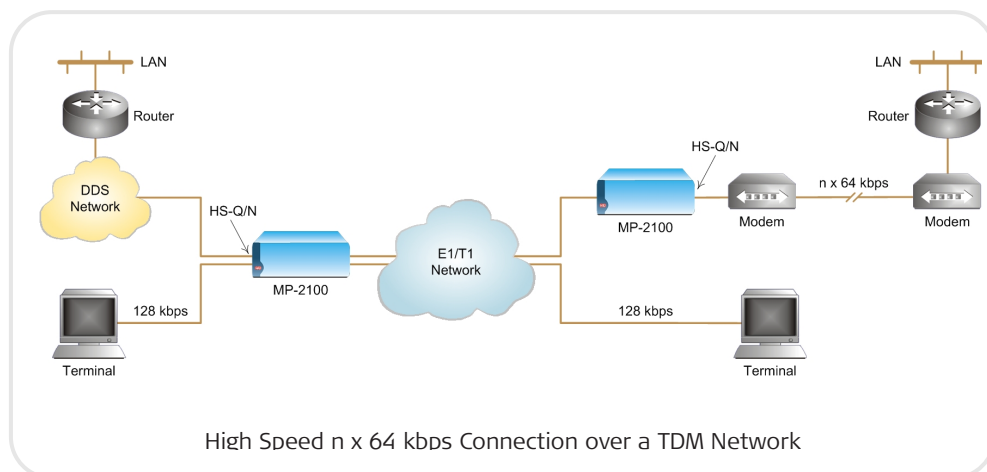
The HS-Q/N module features four high speed synchronous data channels. Each channel is independently set by the user to either V.35 or V.11/RS-422 interface (electrical). The V.11/RS-422 selection provides RS-530, V.36/RS-449, or X.21 interface (physical) operation, via adaptor cables.

Each channel operates at data rates of  $n \times 56$  or  $n \times 64$  kbps (where  $n = 1$  to 24 for T1 link, and 1 to 31 for E1 link). The total capacity of each pair of channels (ch1&2 and ch3&4) is 1536 kbps for T1 links and 1984 kbps for E1 links.

In dual-link applications, each pair of HS-Q/N channels can be independently connected to either of two main links. This enables routing the channels of a single HS-Q/N module to different remote sites.

Each channel can be independently configured to operate in either DCE, External-DCE or DTE timing modes. External-DCE mode is for tail-end applications. Interface DCE/DTE type is jumper set, per channel.

Four high speed synchronous data channels



## HS-Q/N

## 4-Channel High Speed Data Module

A comprehensive self-test initiated upon power-on and extensive diagnostics reduce downtime to a minimum. The internal BERT recognizes several different patterns.

To facilitate diagnostics, remote loopbacks on remote units can be activated by transmitting an FT1 inband loop code. This feature activates the loopback directly from the local site.

Each HS-Q/N channel terminates in a separate 26-pin SCSI connector. Different adaptor cables are offered by RAD to convert from the SCSI connector to a standard V.35, V.36/RS-449, RS-530 or X.21 interface. Cables are ordered separately per channel (each channel can be independently converted to a different interface).

Channel data rates and all other operating parameters of HS-Q/N are user-selectable through the Megaplex management system.

## Specifications

### Number of Data Channels

4

### Connectors

26-pin SCSI, female (one for each channel)

### Data Rate per Channel

Synchronous,  
 $n \times 56$  or  $n \times 64$  kbps, where  
 for T1:  $n=1$  to 24  
 for E1:  $n=1$  to 31

### Interface (Electrical)

User-selectable for each channel: V.35 or V.11/RS-422

### Interface (Physical)

V.35, V.36/RS-449, RS-530, or X.21 (via conversion cables)

### Clock Modes

DCE: HS-Q/N channel provides both RX and TX clocks to the user DTE  
 External DCE (DTE1, used for tail-end applications): HS-Q/N channel provides RX clock to the user while receiving TX clock from the user  
 DTE (DTE2): HS-Q/N channel receives both RX and TX clocks from the user DCE

### Control Signals

CTS follows RTS or is constantly ON, soft-selectable

DCD constantly ON, unless in RED ALARM (one DCD signal for all four channels)

*Note: RTS is not available with V.11/RS-422 interface.*

Megaplex High Speed Modules

### Diagnostics (per channel)

Local loopback  
 Remote loopback  
 Interruptive test  
 Uninterruptive monitor  
 Internal BERT (different patterns available)

### Configuration

Programmable via the Megaplex management system

## Ordering

### MP-2100M-HS-Q/N

### OPTIONAL ACCESSORIES

#### CBL-SCS26/\*/#

Adapter cables for converting the HS-Q/N module 26-pin SCSI connectors to a specified user's equipment connector (a separate cable is required for each channel). Each cable is 2m (6 ft) in length

#### Legend

\* Cable type:

**V35** V.35 interface, 34-pin

**V36** V.36/RS-449 interface, 37-pin

**530** RS-530 interface, 25-pin

**X21** X.21 interface, 15-pin

# Connector type:

**F** female

**M** male

Feature	HS-2	HS-Q/N	HS-6N/12N	HS-U	HS-703	HS-S	HSF-1, HSF-2
Interface Type	V.24/RS-232, V.35, X.21 or V.11/RS-422	V.24/RS-232, V.35, X.21 or V.11/RS-422	V.24/RS-232, V.35, X.21 or V.11/RS-422	ISDN "U"	G.703	ISDN "S"	IEEE C37.94 Fiber optic
Number of Channels	2	4	6/12	4/6/12	4	4	1/2
Number of Connectors	2	4	2/4	4	4	4	1/2
Data Rate	$n \times 64$ kbps $n \times 56$ kbps	$n \times 64$ kbps $n \times 56$ kbps	$n \times 64$ kbps	128 kbps	64 kbps	128 kbps	up to $10 \times 64$ kbps
Supported by MP-4100	-	-	✓	HS-U-6, HS-U-12	✓	✓	HSF-2

### International Headquarters

24 Raoul Wallenberg Street  
 Tel Aviv 69719, Israel  
 Tel. 972-3-6458181  
 Fax 972-3-6498250, 6474436  
 E-mail market@rad.com

### North America Headquarters

900 Corporate Drive  
 Mahwah, NJ 07430, USA  
 Tel. 201-5291100  
 Toll free 1-800-4447234  
 Fax 201-5295777  
 E-mail market@radusa.com

[www.rad.com](http://www.rad.com)



data communications

The Access Company