

Kilomux-2100/2104

KLS.2

Statistical Multiplexing Data Module



- Four asynchronous data channels with statistical multiplexing
- Enhanced diagnostics through loopback and BER test
- Maximum composite data rate of 19.2 kbps
- Channel data rates selectable from 300 bps to 19.2 kbps

The KLS.2 Data Module provides four asynchronous data channels with RS-232/V.24 interface for the Kilomux. A separate RJ-45 connector is available for each channel. Channel interface is DCE.

The data rate on each channel is selectable from 300 bps to 19.2 kbps. All channels are statistically multiplexed onto a single composite bit stream, with bandwidth selectable up to 19.2 kbps. The composite link is multiplexed onto the Kilomux main link.

Four control signals are supported per channel. One control signal per channel may be transmitted end-to-end for handshaking purposes. Local RTS appears as DCD at the remote site. DTR and CTS are available for use as hard flow control.

KLS.2 offers hard and soft flow control for each channel, for both end-to-end and channel-to-terminal transfer. Several characters for X-ON and X-OFF are supported, allowing compatibility with most applications.

Comprehensive diagnostic capabilities reduce downtime to a minimum. Diagnostics include loopbacks on the composite link and each data channel and built-in BER test on the composite link. Automatic self-test is performed during power-up and normal operation.

End-to-end control
signal transfer



data communications

The Access Company

KLS.2

Statistical Multiplexing Data Module

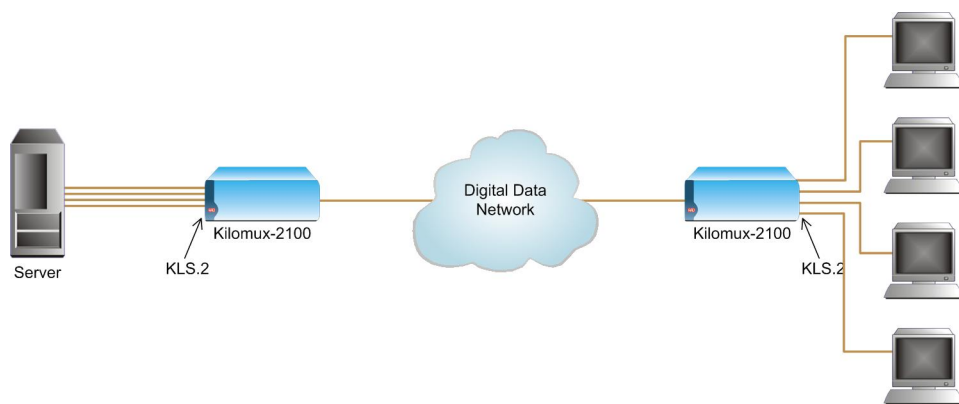


Figure 1. Data Application with Statistical Multiplexing

Specifications

Number of Channels

4 (asynchronous)

Interface

ITU V.24/V.28, EIA RS-232, DCE

Connectors

Four, RJ-45 8-pin connectors

Asynchronous Parameters

Data bits: 5, 6, 7 or 8

Stop bits: 1, 1.5 or 2

Parity: None, odd or even

Data Rates

300bps to 19.2 kbps

Flow Control

Hard:

CTS from channel to terminal (DCE-DTE)

DTR/CTS for end-to-end (DTE-DTE)

Soft:

X-ON, X-OFF character selectable from DC1 (11H) to DC4 (14H) and from 91H to 94H

Composite Bit Rate

Up to 19.2 kbps

Composite Multiplexing Technique

Statistical

Bandwidth Allocation on Main Link

Selectable, according to programmed composite data rate

Control Signals

Local support:

DTR end-to-end hard flow control

CTS hard flow control of terminal

End to End:

RTS-DCD

Diagnostics

Composite link

Local loopback

Remote loopback

PRBS transmission

Built-in BER test

Independent for each channel

Local loopback

Remote loopback

Auto self-test upon power-up and during normal operation

Indicators

TEST, SYNC, ERR for selected channel: Tx, Rx, RTS and DCD on Kilomux front panel

Management

Programmable via terminal interface, Telnet or RADview management system







KLS.2

Statistical Multiplexing Data Module

Ordering

KM-2000-KLS.2

Table 1. Kilomux-2100/2104 Data Modules

| |  KHS.1 |  KHS.2 |  KHS.U |  KHS.703 |  KLS.2 |  KLS.1/N |
|-----------------|---|---|---|---|---|--|
| No. of Channels | 2 | 2 | 1 | 2 | 4 | 2 |
| Interface | V.35, RS-530, V.36/RS-449 or X.21 | V.35, RS-530, V.36/RS-449 or X.21, V.24/RS-232 | ISDN "U" | Codirectional, per G.703 | V.24/RS-232 | V.24/RS-232, Sync or Async |
| Connector | Two 25-pin D-type, female | Two 25-pin D-type, female | RJ-45 | RJ-45 | Four RJ-45 connectors | Two 25-pin D-type, female |
| Data Rates | 32, 48, 56, 64, 128, 192, 256 or 384 kbps* | 2.4 kbps to 614.4 kbps* | Per B Channel 16, 32 and 64 kbps Per D Channel 16 kbps | 64 kbps | 300 bps to 19.2 kbps async. (statistically multiplexed) | Group 1: 300 bps to 38.4 kbps, sync and async, Group 2: 7.2, 14.4, 28.8, 57.6 kbps, sync and async, Group 3: 8, 16, 24, 32, 48, 56, 64 kbps, sync |

Note: The supported channel data rates specified in Table 1 are dependent on the main link rates employed. To view limitations please refer to Specifications in the relevant module data sheets.

420-106-1108 Specifications are subject to change without prior notice. © 1988-2008 RAD Data Communications Ltd. The RAD name, logo, logo type, and the terms EtherAccess, TDMoIP and TDMoIP Driven, and the product names Optimux and Irmux are registered trademarks of RAD Data Communications Ltd. All other trademarks are the property of their respective holders.

International Headquarters
24 Raoul Wallenberg Street
Tel Aviv 69719, Israel
Tel. 972-3-6458181
Fax 972-3-6498250, 6474436
E-mail market@rad.com

North America Headquarters
900 Corporate Drive
Mahwah, NJ 07430, USA
Tel. 201-5291100
Toll free 1-800-4447234
Fax 201-5295777
E-mail market@radusa.com

www.rad.com



data communications
The Access Company